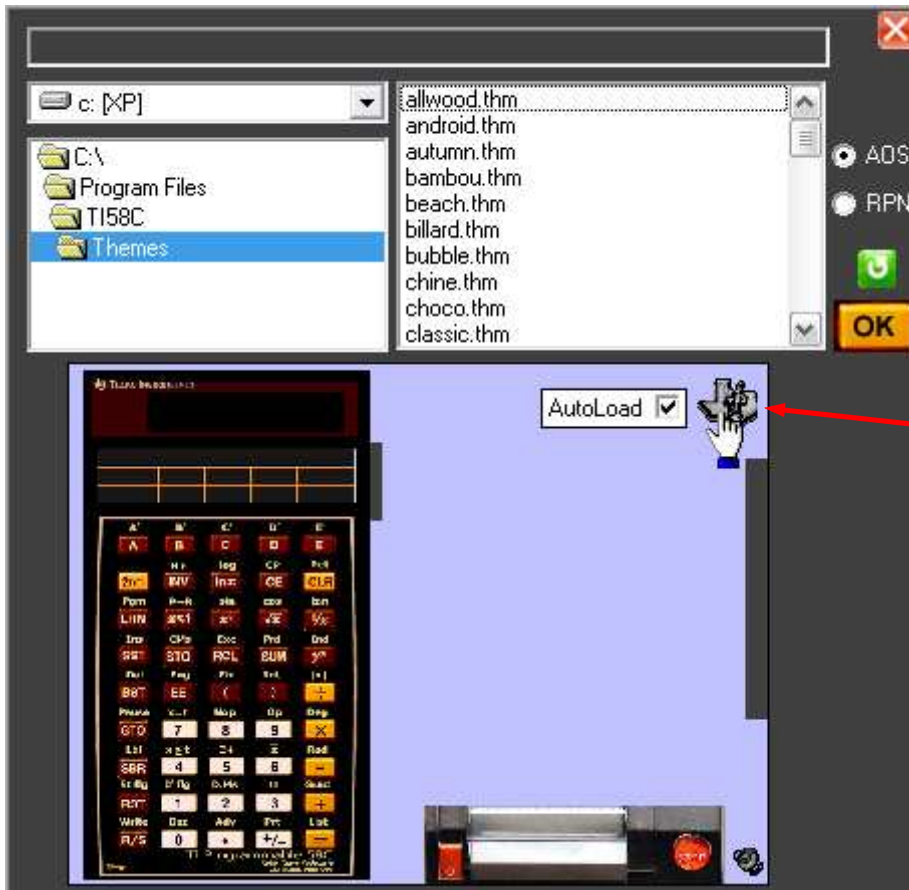


Automatic loading themes

When the name of a theme exactly matches the name of the program (example: othelloEN.thm and othelloEN.t58), it can be automatically loaded when you open the program (if you have selected the option "AutoLoad" before), or if a file association (**.alt**) exists matching exactly the name of the program. (example: othelloEN.alt and othelloEN.t58)



Click on the logo of the theme to bring up the option.

To assign a theme to a program, you must open the program, choose the theme and use **ALT A**.

A **.alt** file corresponding to the name of the program is created in the themes directory.

