

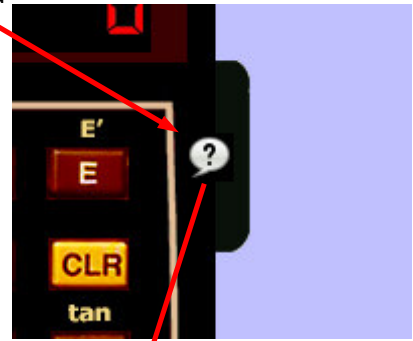
TI58 GenHelp is an utility that allows you to create and modify the help files for the TI58C emulator programs.



In the **TI58C** emulator, when a program is loaded, an icon may appear (if exists a help file corresponding to the program).

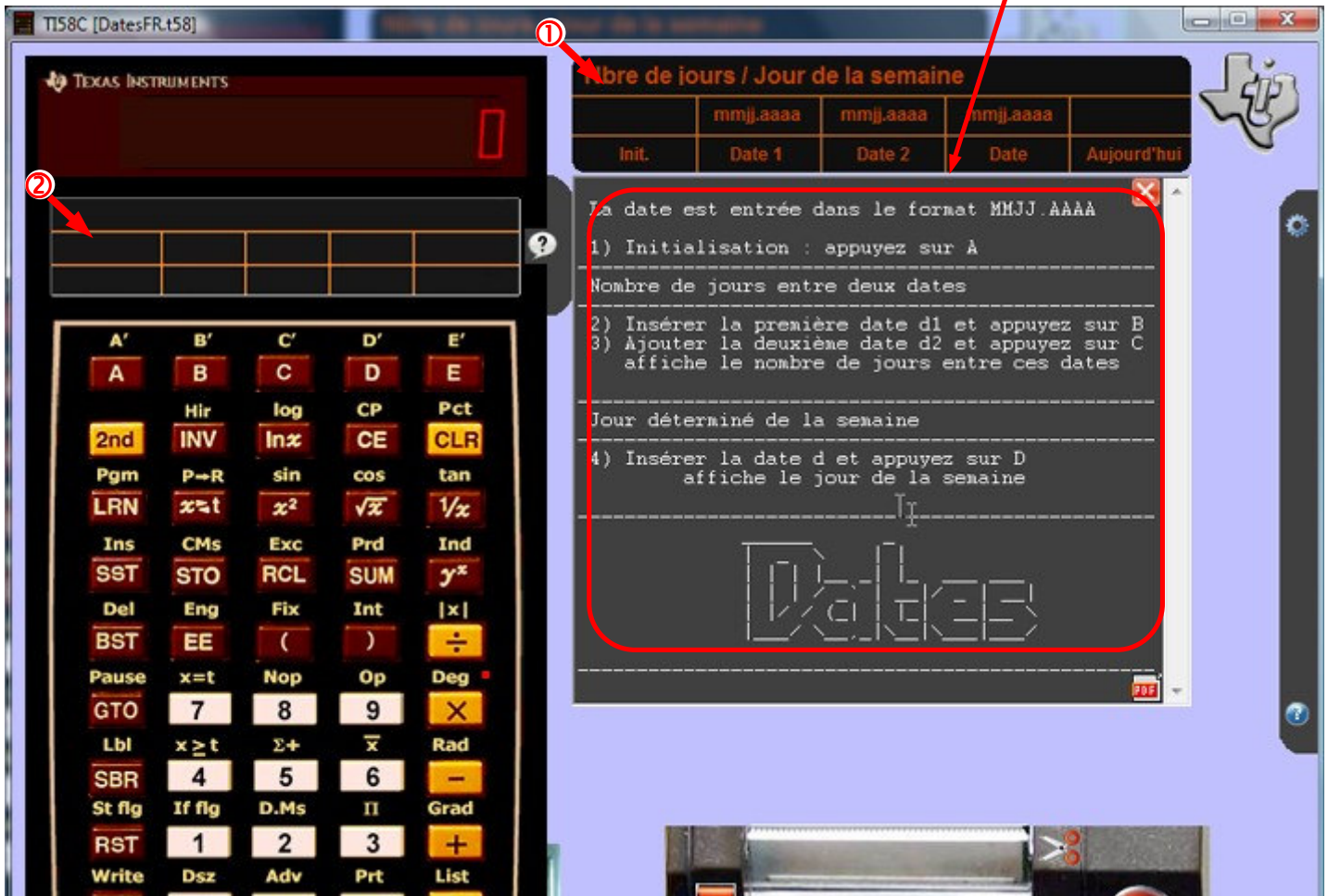
This icon displays the help for the program as well as the function key card that can be displayed

- ① to the right of the calculator,
- ② either directly on the calculator (if the chosen skin allows it)



The program card is :

- is generated from the **.hlp** file corresponding to the program,
- either from a **.bmp** or **.crd** image file corresponding to the program.



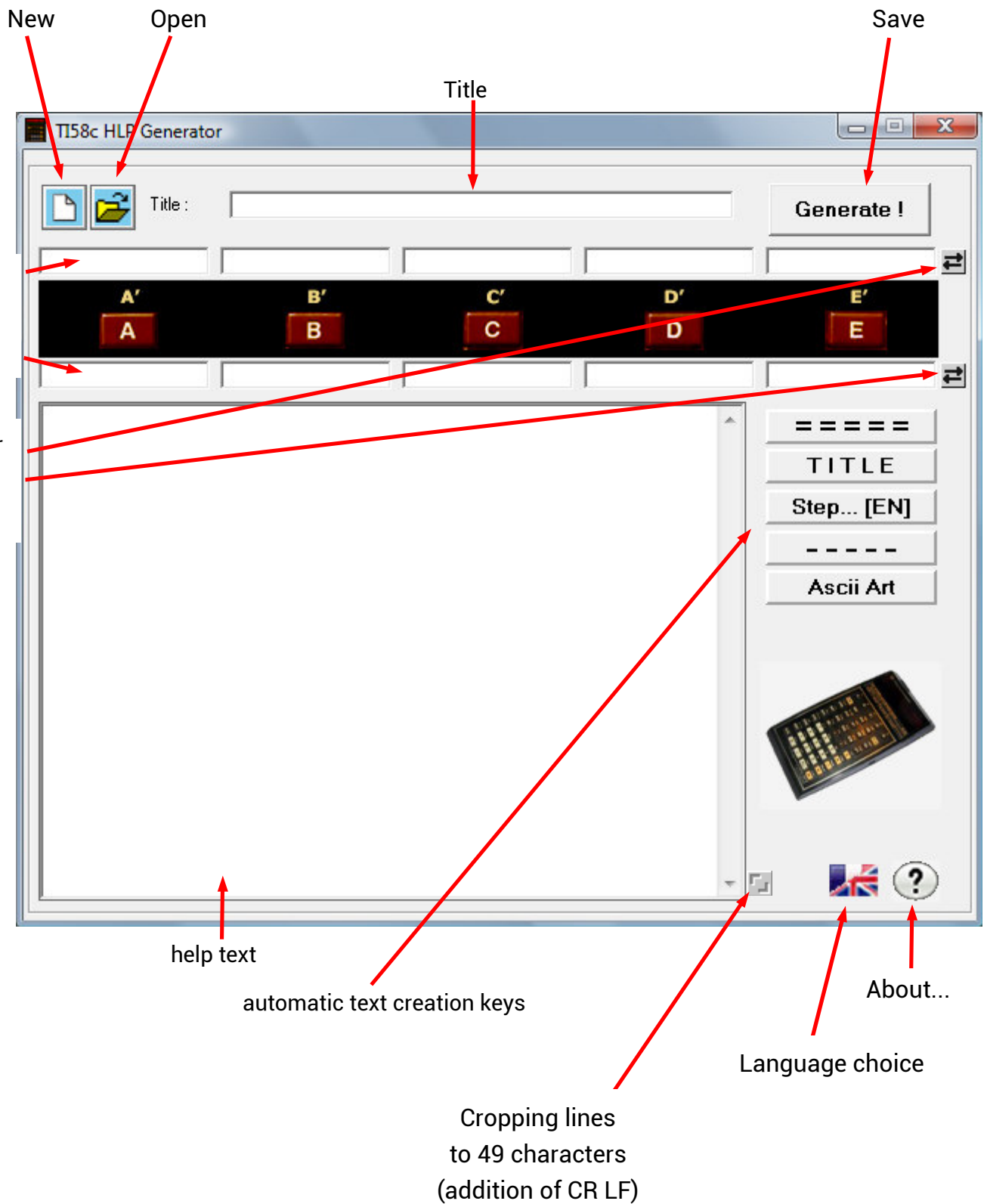
The documentary files of the program are :

(for a programme xxxxxxxx.t58 or xxxxxxxx.t59 or xxxxxxxx.lst ...)


- xxxxxxxx.hlp for program description, function keys and title,
- xxxxxxxx.bmp for the card outside the calculator,
- xxxxxxxx.crd for the card present on the calculator.

These files are created and managed by the **TIGenHlp** utility.





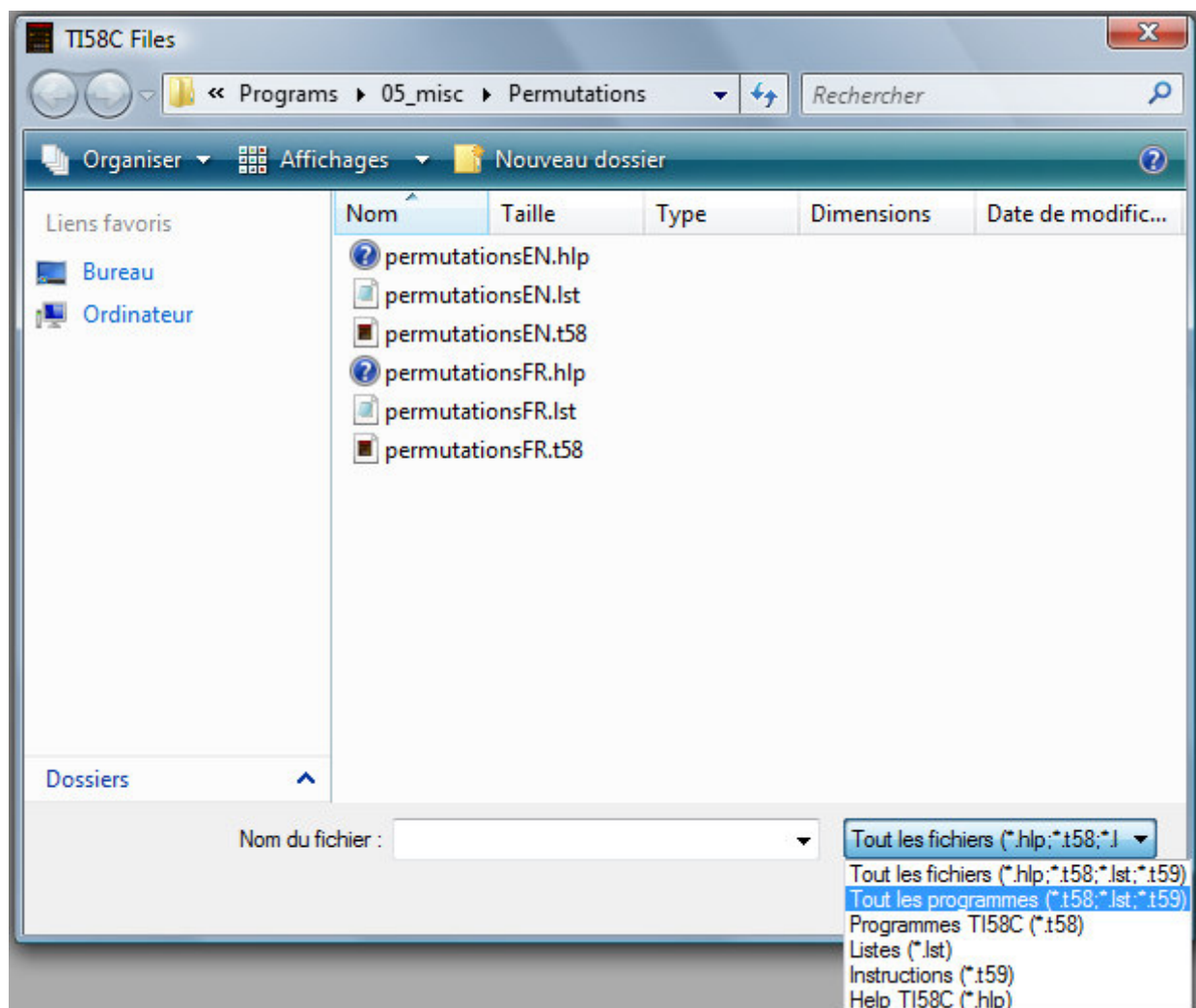
New

 Clears all fields to allow the creation of a new help file.

Open

 Opening

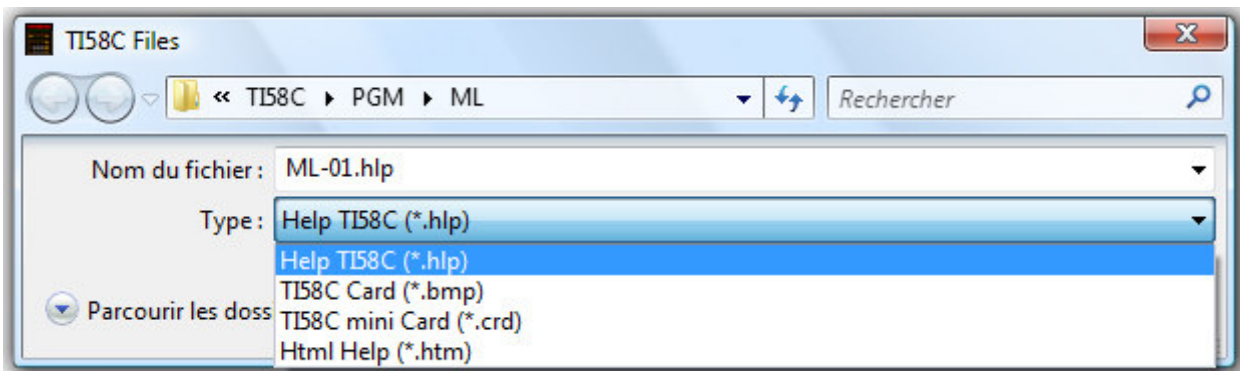
- an **.hlp** file to modify it,
- a **.t58, .lst, .t59** program for creating a help file :
the name of the program is used as the title and the labels of the keys are created from comments associated with **[LBL] [A]...[LBL] [E]** statements in programs **.t58** et **.lst**



Save

Generate !

saves the input as a **.hlp** help file, or creates the cards **.bmp** or **.crd** programs as well as a **.htm** html file

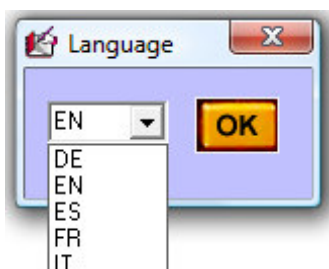


Language choice

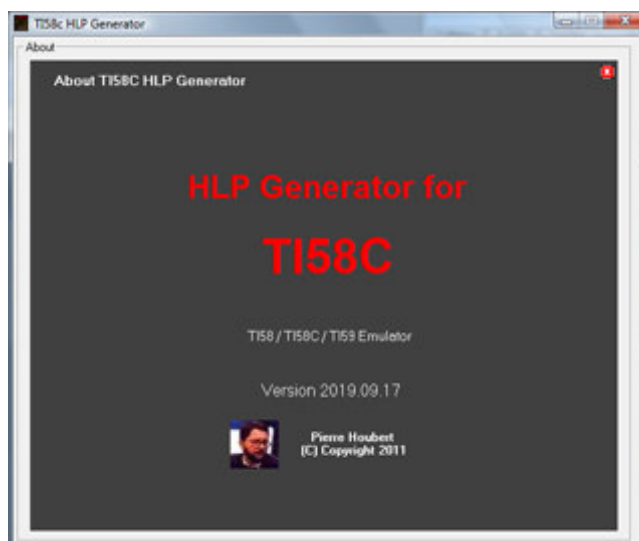


TIGenHlp is available in 5 languages: German, English, Spanish, French and Italian.

It is possible to translate the file **TiHlpEN.lan** (or **TiHlpFR.lan...**) via a text editor and to save it as **TiHlpXX.lan** where **XX** is the code of the new language.



About...



Entering information

Title

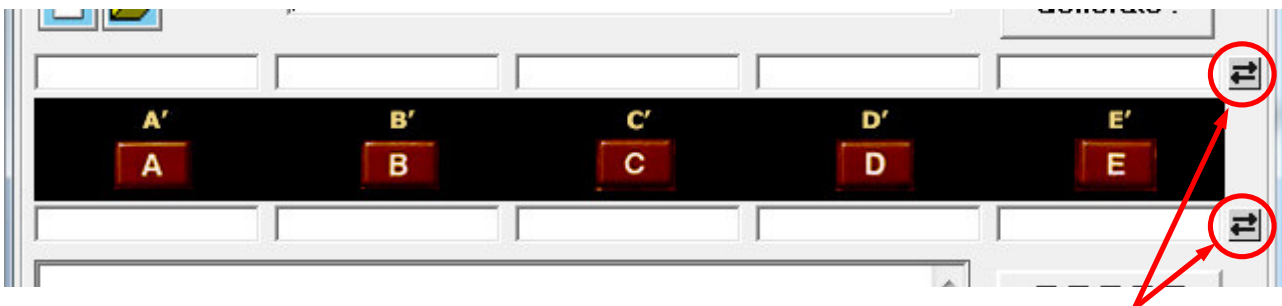
- entered, the title can not exceed 49 alphanumeric characters,
- generated, if program `.t58`, `.lst`, `.t59` opened, it takes again the name of the program (without the extension).



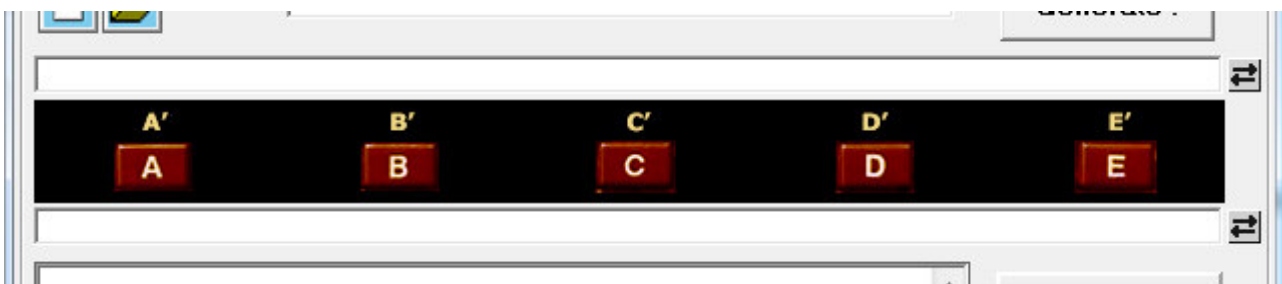
Labels of function keys

The labels of the function keys correspond respectively to **A'**, **B'**, **C'**, **D'**, **E'** for the first line then to **A**, **B**, **C**, **D**, **E** for the second.

Each label contains ten or so alphanumeric characters.

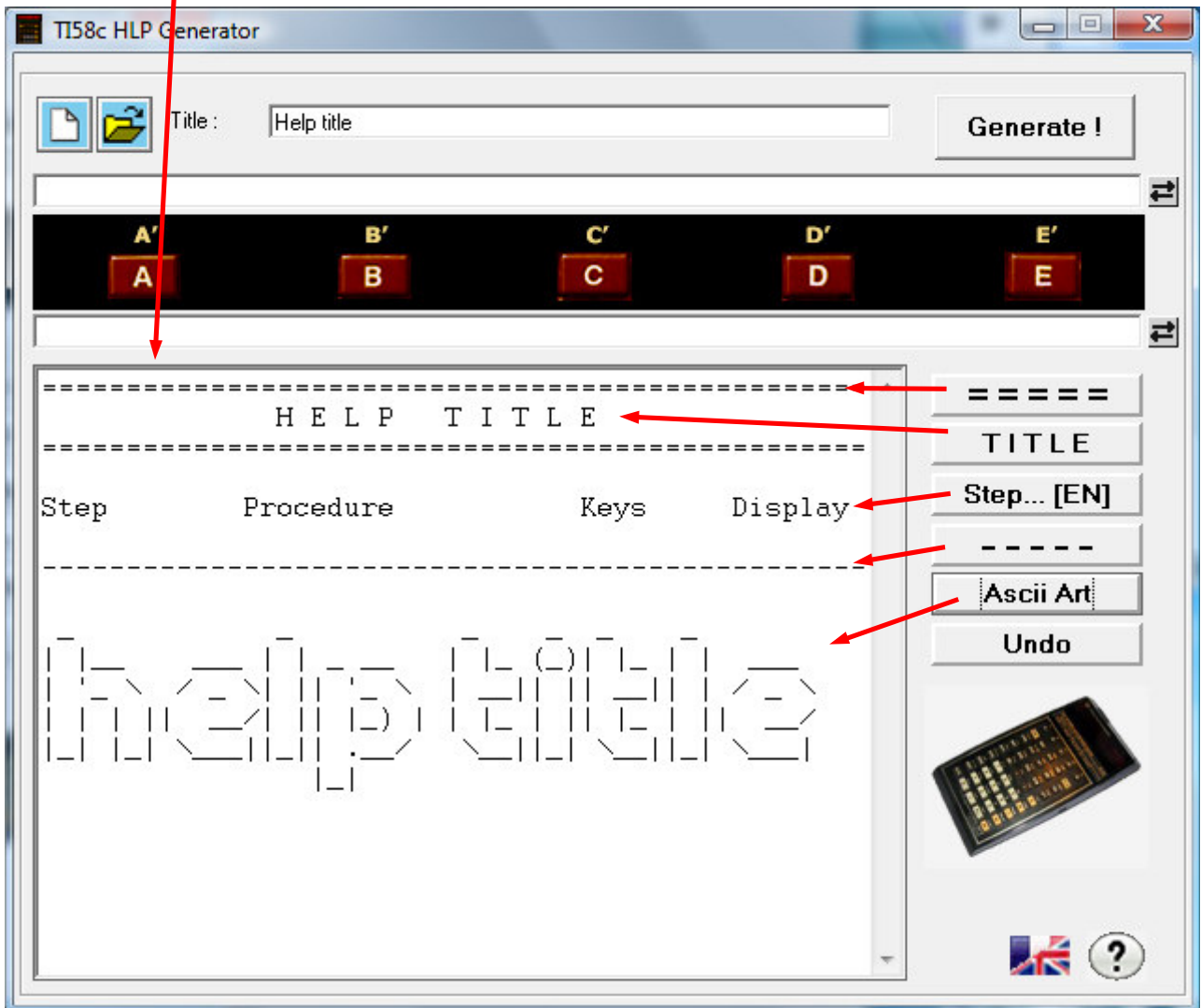


Each line of 5 labels can be replaced by a comment line by clicking on the button on the right.



help text

The text of the help is free but each line can not exceed 49 characters.



The help text can be completed using preset text add keys.
An **undo** key cancels the last use of one of these keys.



The generated files

The files created and managed by TIGenHlp utility are :
(for a programme xxxxxxxx.t58 or xxxxxxxx.t59 or xxxxxxxx.lst ...)

- xxxxxxxx.hlp for program description, function keys and title,
- xxxxxxxx.bmp for the card outside the calculator,
- xxxxxxxx.crd for the card present on the calculator,
- xxxxxxxx.htm for the html page.

.hlp file

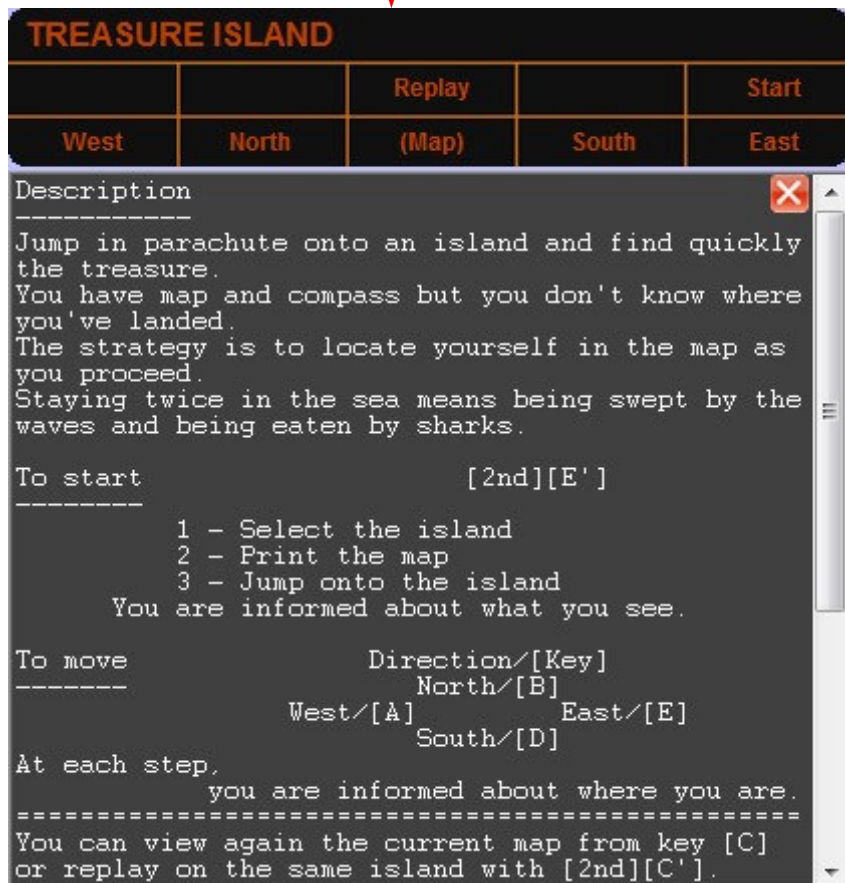
- Line 1 contains the title,
- Line 2 contains the labels of the keys **A', B', C', D', E'**,
- Line 3 contains the labels of the keys **A, B, C, D, E**,
- The following lines contain the text.

In lines 2 and 3, the labels are separated by the character # (ALT GR 3).

This character can be replaced by | (ALT GR 6) or by α (ALT GR \$)

```
TREASURE ISLAND
##Replay##Start#
West#North#(Map)#South#East#
Description
-----
Jump in parachute onto an island and find quickly
the treasure.
You have map and compass but you don't know where
you've landed.
The strategy is to locate yourself in the map as
you proceed.
Staying twice in the sea means being swept by the
waves and being eaten by sharks.

To start                                     [2nd][E']
-----
1 - Select the island
2 - Print the map
3 - Jump onto the island
```



.CRD file

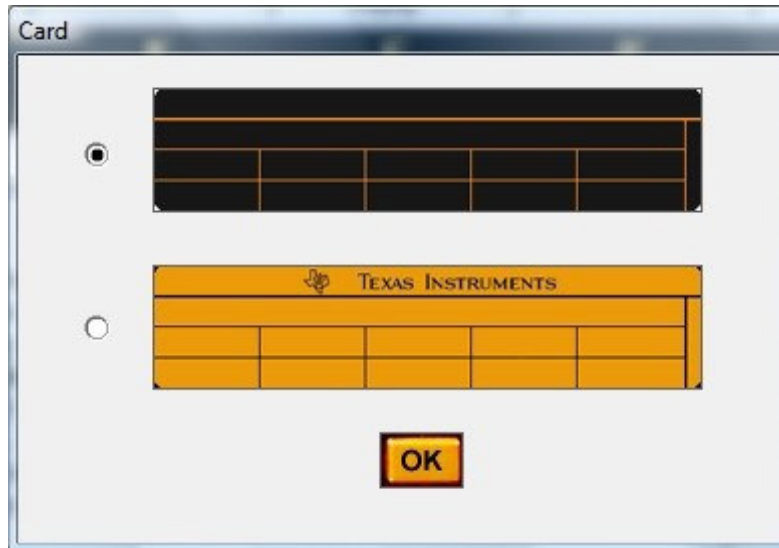
TREASURE ISLAND				
West	North	Replay (Map)	South	Start East

.BMP file

TREASURE ISLAND				
West	North	Replay (Map)	South	Start East




Before generate the image files, a screen allows to choose the model of card :



TREASURE ISLAND				
West	North	Replay	South	Start
		(Map)		

TREASURE ISLAND				
West	North	Replay	South	Start
		(Map)		

TREASURE ISLAND				
West	North	Replay	South	Start
		(Map)		

 TEXAS INSTRUMENTS				
TREASURE ISLAND				
West	North	Replay	South	Start
		(Map)		



TREASURE ISLAND				
		Replay		Start
West	North	(Map)	South	East

TREASURE ISLAND				
		Replay		Start
West	North	(Map)	South	East

.BMP

.CRD

.HLP

```
TREASURE ISLAND
##Replay##Start#
West#North#(Map)#South#East#
Description
-----
Jump in parachute onto an island and find quickly
the treasure.
You have map and compass but you don't know where
you've landed.
The strategy is to locate yourself in the map as
you proceed.
Staying twice in the sea means being swept by the
waves and being eaten by sharks.

To start
-----
[2nd][E']

1 - Select the island
2 - Print the map
3 - Jump onto the island
You are informed about what you see.

To move
-----
Direction/[Key]
North/[B]
```



TREASURE ISLAND

TEXAS INSTRUMENTS				
TREASURE ISLAND				
		Replay		Start
West	North	(Map)	South	East

Description

Jump in parachute onto an island and find quickly the treasure.
You have map and compass but you don't know where you've landed.
The strategy is to locate yourself in the map as you proceed.
Staying twice in the sea means being swept by the waves and being eaten by sharks.

To start [2nd] [E']

1 - Select the island
2 - Print the map
3 - Jump onto the island
You are informed about what you see.

To move Direction/[Key]

North/[B]
West/[A] East/[E]
South/[D]

At each step,
you are informed about where you are.

Prêt



Shortcuts

File records can be done directly using keyboard shortcuts :

- **ALT S** to save the file **.HLP**,
- **ALT B** to generate the card image (**.BMP**),
- **ALT C** to generate the image of the minicard (**.CRD**),
- **ALT H** to generate the Html file (**.HTM**)

Warning :

in the case of direct recording via a shortcut no confirmation is requested, and the destination file, if it already exists, will be replaced automatically.



Warning to the readers

The informations contained in this manual are given as an indicative guide and have no exhaustive character even certain.

As an example not restrictive, this manual can propose you one or several addresses of Web sites which will be not more current or which the contents will have changed when you will access it.

So, this information should not engage the responsibility of the author of this manuel.

The author cannot be considered responsible for any omission, error or gap which would have been present into this manual as well as consequences, whoever they are, who would result from information and indications supplied as well as with their use.

Products named in this manual are protected, and trademarks are registered by their holders of respective rights.

This manual is neither published, nor produced by the owners of the calculators which are concerned and the marks are used only as name of products.

