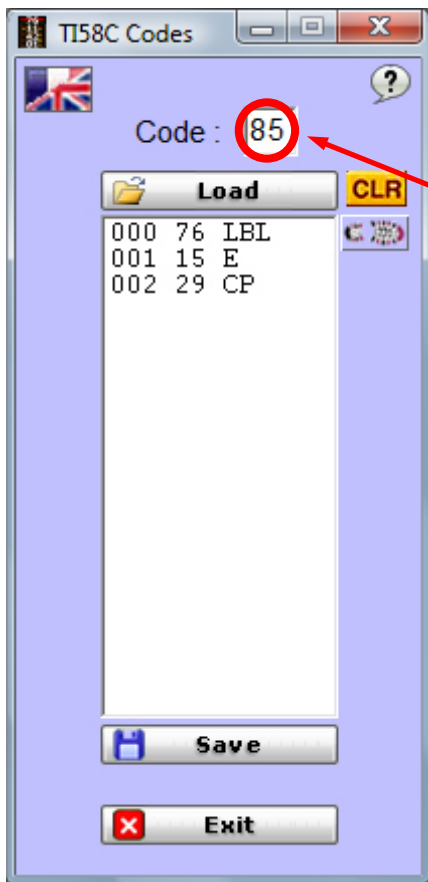


TI58C Codes is a utility for entering TI programs via the two-digit code of the instructions.



TI58C Codes allows quick and easy retrieval of TI programs by entering only instruction codes.



PPX-59 Professional Proc

LOC	CODE	KEY	COMMENTS
000	76	LBL	
1	15	E	
2	29	CP	
3	85	+	
4	01	1	
5	95	=	
6	42	STO	Store N+1
7	58	S8	
8	42	STO	
9	00	00	
289	42	STO	
290	55	S5	
291	43	RCL	
292	53	S3	
293	42	STO	
294	54	S4	

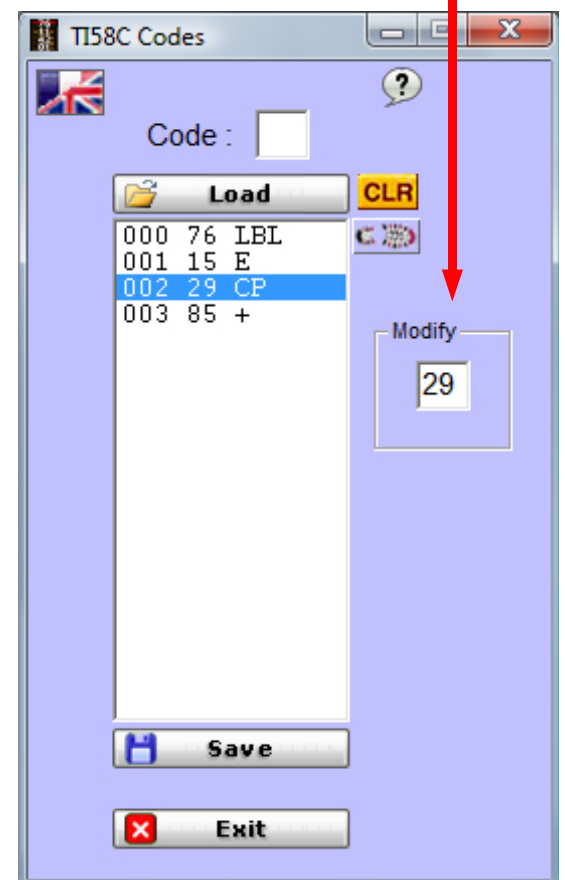
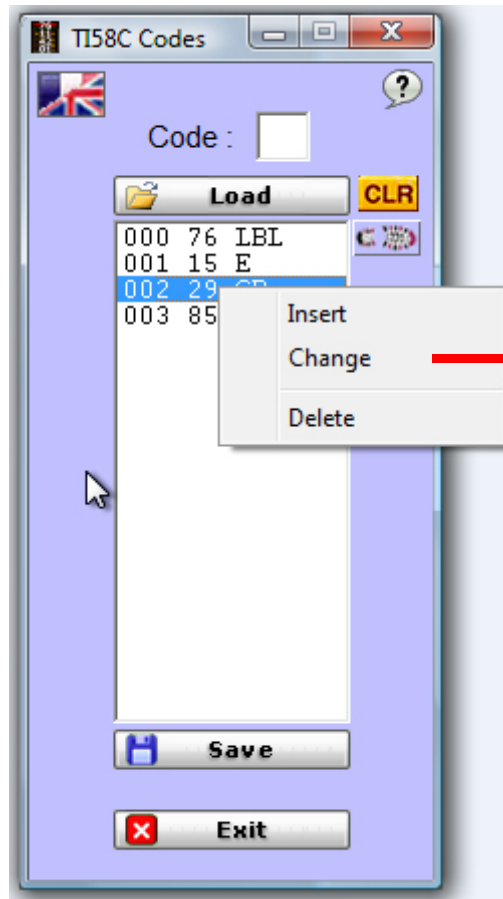
Only instruction codes are entered without having to validate.
As soon as the second digit is entered, the instruction line is added to the list with code translation.

In the example it will be enough to enter : 7 6 1 5 2 9



In case of an input error, a click on the line displays a contextual menu to be able to :

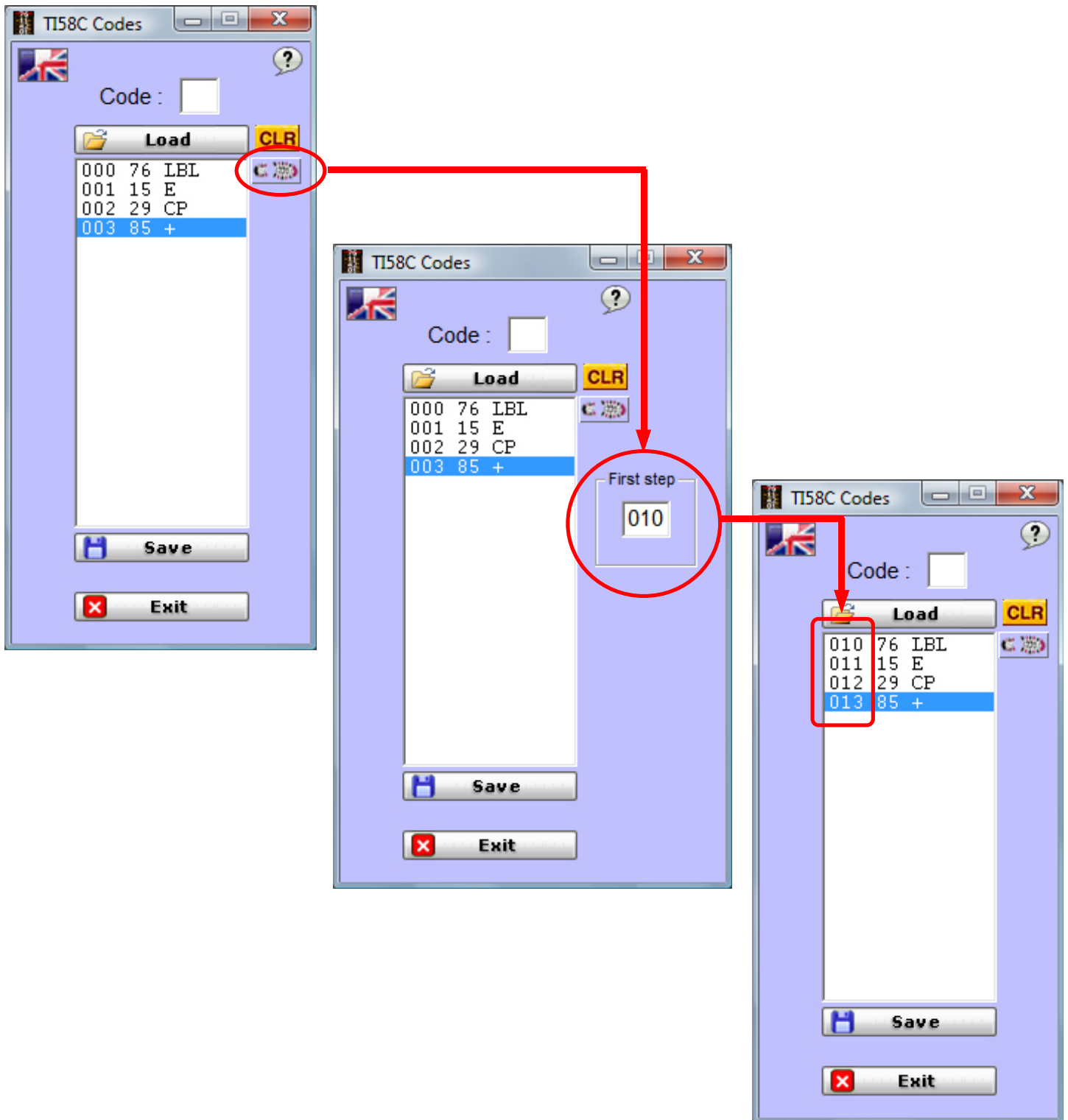
- insert a forgotten code,
- modify the code of the line,
- delete the line.



In any case the last line of the list becomes the current line.



The address of the starting step can, at any time, be modified by clicking on the button



This option allows you to enter a long program into several pieces that will then merge.

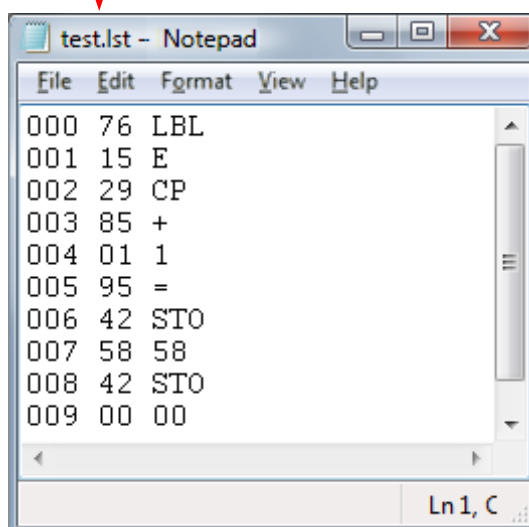
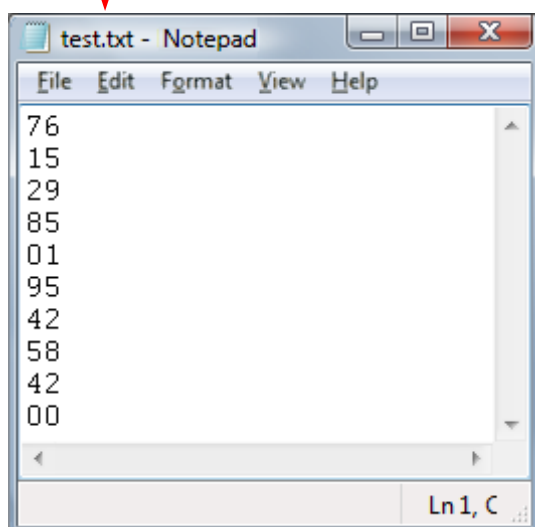
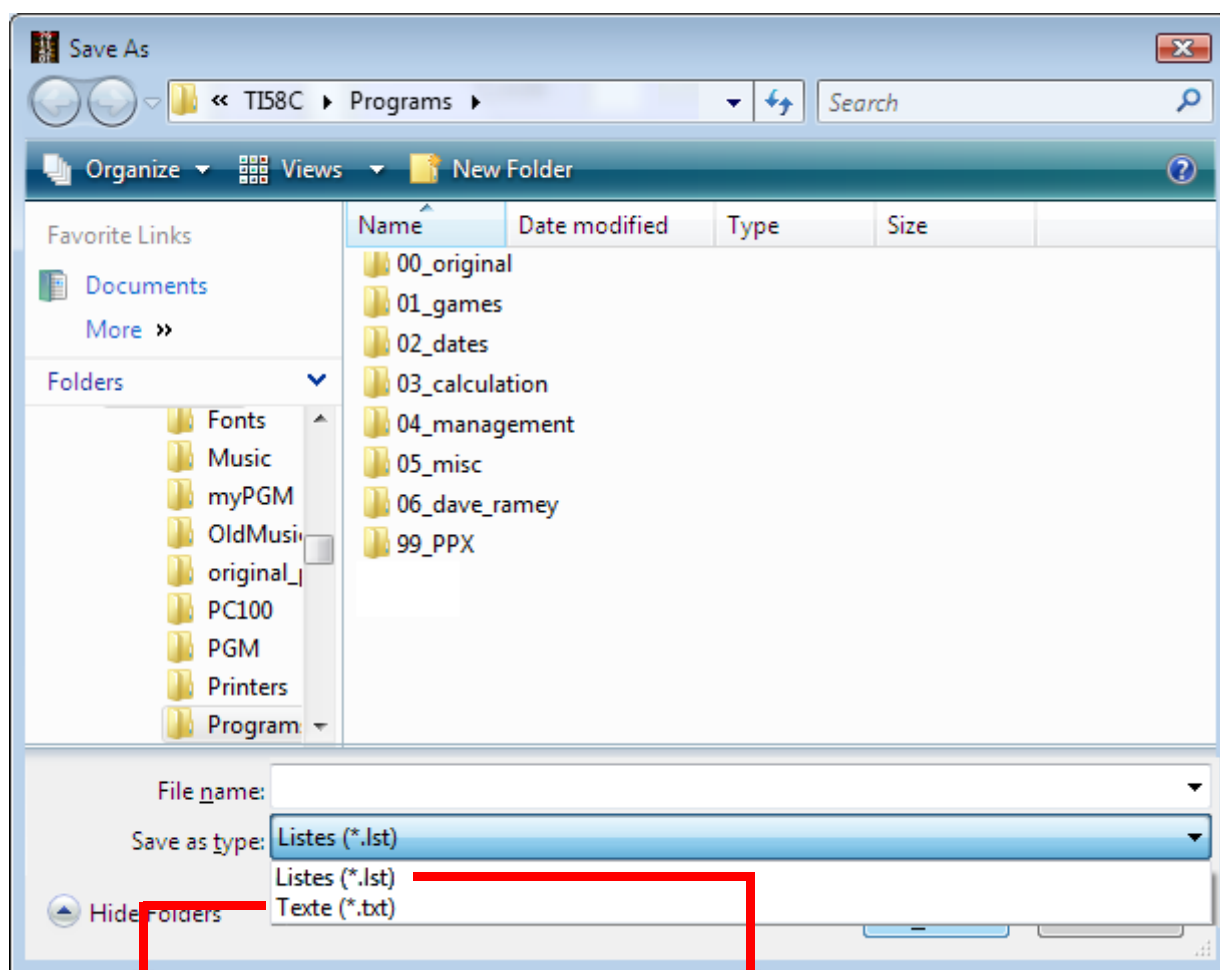




Save

Input made via **TI58C Codes** can be saved in two file types:

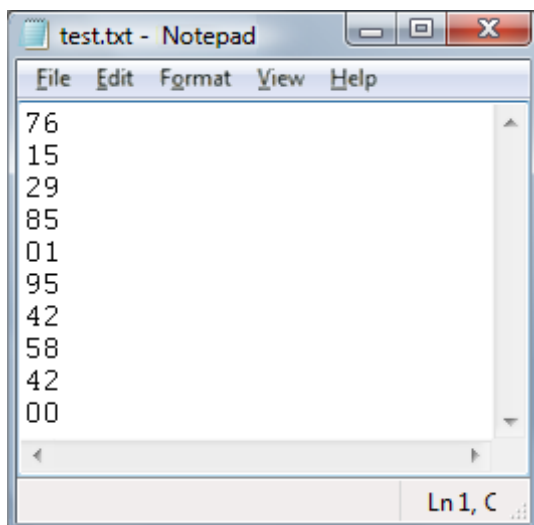
- program file in the form **.lst**
- text file (**.txt**) containing the list of codes entered



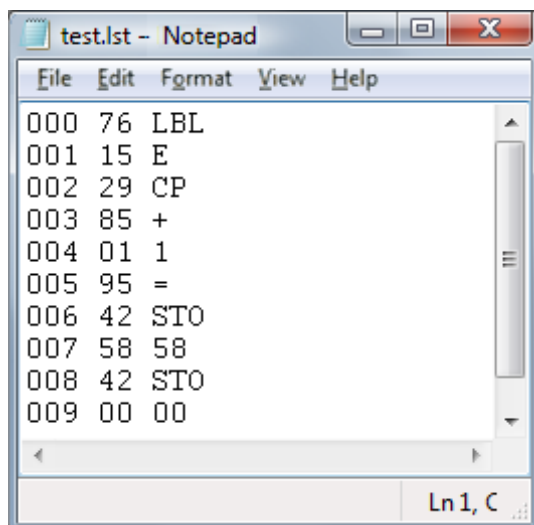


Files that can be opened with TI58C Codes are :

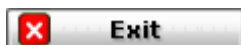
- program file in the form **.lst**
- text file (**.txt**) containing the list of codes entered



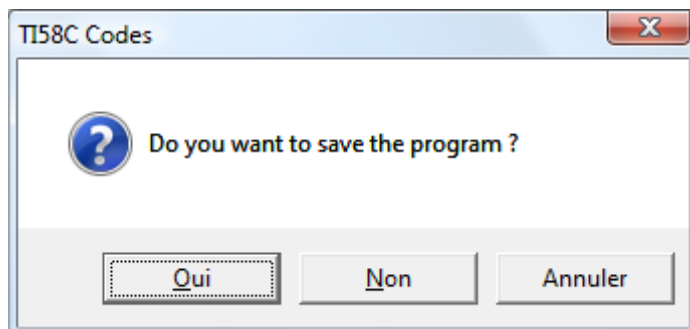
The lines of the **.txt** file are added to the current list



The lines in the **.lst** file replace the current list, unless the line numbers in the open **.lst** file complete the current list.

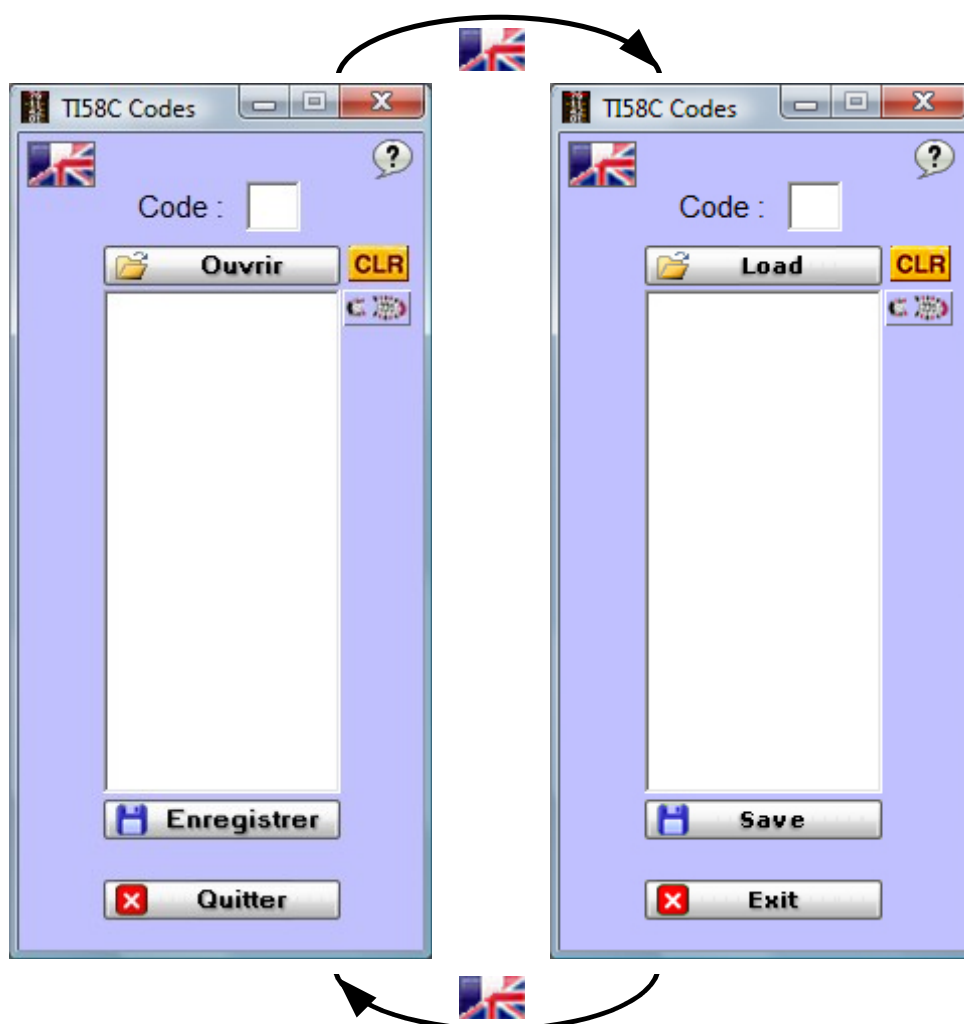


If an entry is in progress, a confirmation is requested.




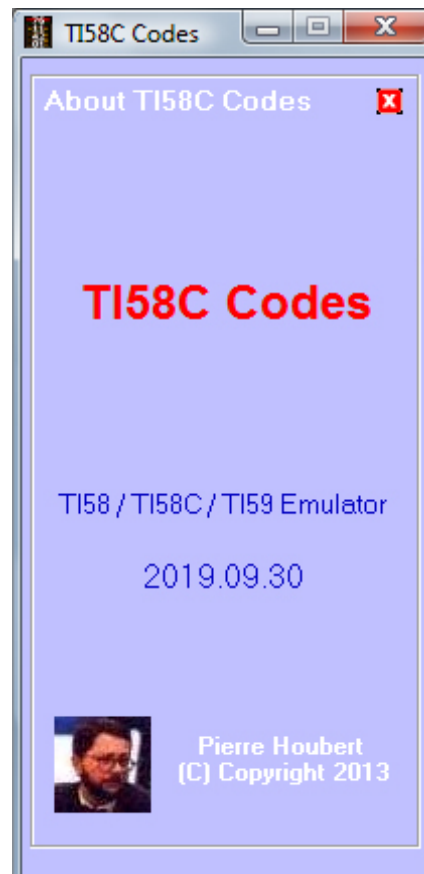
TI58C Codes is available in two languages: French and English.

Clicking the button  switches from one language to another.



About

Clicking the button  brings up the "About" screen that shows the program version.



Warning to the readers

The informations contained in this manual are given as an indicative guide and have no exhaustive character even certain.

As an example not restrictive, this manual can propose you one or several addresses of Web sites which will be not more current or which the contents will have changed when you will access it.

So, this information should not engage the responsibility of the author of this manuel.

The author cannot be considered responsible for any omission, error or gap which would have been present into this manual as well as consequences, whoever they are, who would result from information and indications supplied as well as with their use.

Products named in this manual are protected, and trademarks are registered by their holders of respective rights.

This manual is neither published, nor produced by the owners of the calculators which are concerned and the marks are used only as name of products.

